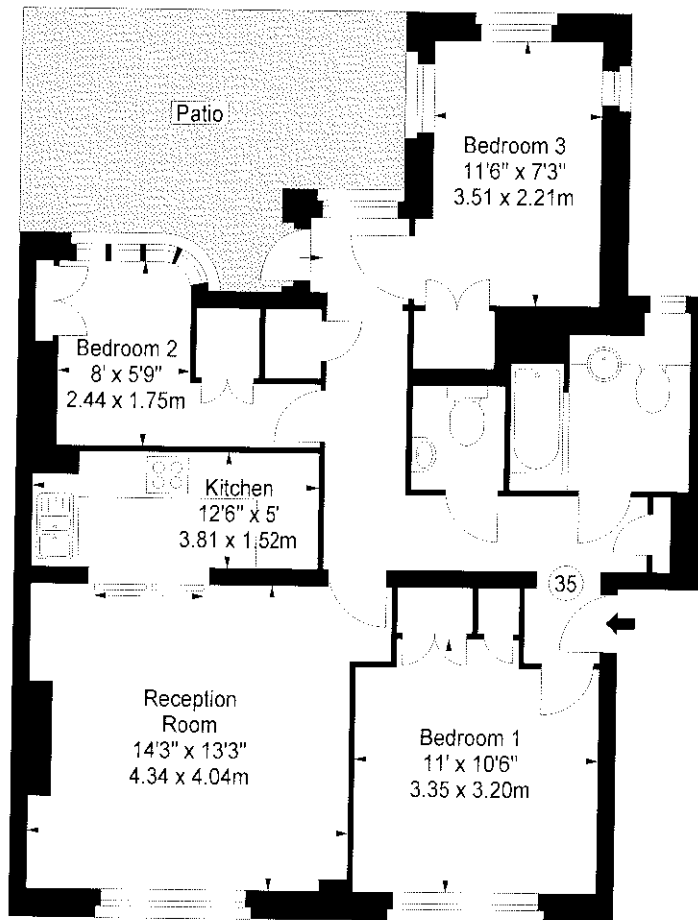


**Flat 35,  
Kew Bridge Court, W4**  
Approx. Gross Internal Area \*  
774 Ft<sup>2</sup> - 71.90 M<sup>2</sup>



**Ground Floor**

Illustration For Identification Purposes Only. Not to Scale

\* As Defined by RICS - Code of Measuring Practice

**BKR**  
FLOORPLANS

(OFFICES THROUGHOUT THE UK)

T: 0845 267 2023  
WWW.BKRFLOORPLANS.CO.UK  
2007